



# Light and Dark

I can explain that I need light to see things, and that dark is the absence of light.



Complete the paragraph using the key words below to show what you have found out about light and dark.

A \_\_\_\_\_ source is something that makes light. Some examples of light sources are the \_\_\_\_\_, light bulbs, a \_\_\_\_\_ and fire.

\_\_\_\_\_ is the absence of light. It is dark at \_\_\_\_\_ time because light from the sun is not visible. When it is dark, there is no light to illuminate objects, so we can't see them. We need light to be able to see things.

In the feely bag activity, we could not \_\_\_\_\_ the objects when they were in the dark \_\_\_\_\_. When the bags were opened up so light could illuminate the objects, we could see them clearly. This shows that we need \_\_\_\_\_ to see.

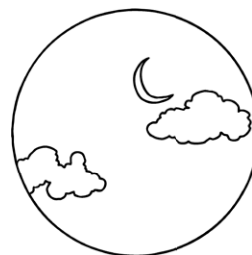
## Key words



light



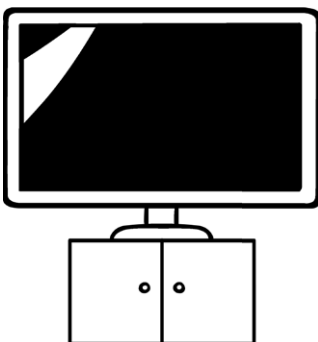
dark



night



bags



television



sun



see



light



# Light and Dark

I can explain that I need light to see things, and that dark is the absence of light.



Complete the paragraph below by filling the gaps to show what you have found out about light and dark.

A light \_\_\_\_\_ is something that makes light. Some examples of light sources are \_\_\_\_\_.

Some objects seem to make light but are not really light sources. The moon is not a light source because it reflects \_\_\_\_\_.

Dark is the \_\_\_\_\_ of light. It is dark at night time because light from the sun is not visible. When it is dark, there is no \_\_\_\_\_ to illuminate objects, so we \_\_\_\_\_ see them. We need light to be able to see things.

When the feely bags were dark inside, we \_\_\_\_\_.

When the bags were opened up so light could illuminate the objects, we \_\_\_\_\_.

\_\_\_\_\_ . This shows that we need light to see.



# Light and Dark

I can explain that I need light to see things, and that dark is the absence of light.



Complete the paragraph below by explaining what you have found out about light and dark.

A light source is \_\_\_\_\_ . Some examples of light sources are

\_\_\_\_\_ .

Some objects seem to make light but are not really light sources. \_\_\_\_\_ is not a light source because \_\_\_\_\_

\_\_\_\_\_ .

Dark is \_\_\_\_\_ . It is dark at night time because \_\_\_\_\_

\_\_\_\_\_ .

When it is dark, there is no light to illuminate objects, so \_\_\_\_\_ .

We need light to \_\_\_\_\_ .

In the feely bag activity, we \_\_\_\_\_

\_\_\_\_\_ .

\_\_\_\_\_ .

This shows that we \_\_\_\_\_

\_\_\_\_\_ .